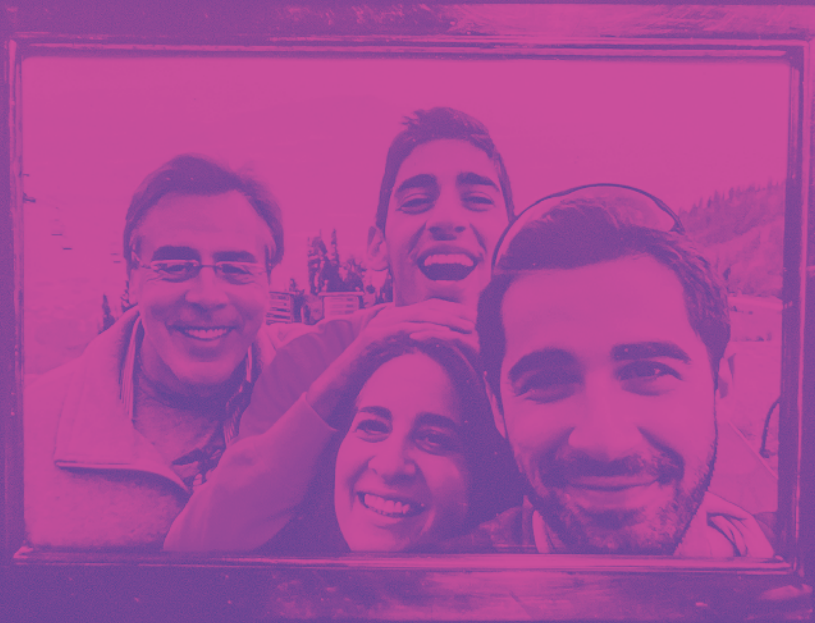


Giving Report 2018–19



HARVARD UNIVERSITY GRADUATE SCHOOL OF DESIGN



Attendees at the 2018 Reunion.

To the GSD community:

It is with great pleasure and gratitude that we present you with the fiscal year 2019 Giving Report, which recognizes your generosity toward the Harvard University Graduate School of Design (GSD) over the year.

First and foremost: thank you. We truly appreciate your decision to give your time, energy, and resources to the GSD. The stories in this report show the incredible impact that your support has on our students and faculty; your philanthropy empowers them to push the boundaries of design.

As you will see in the following pages, the GSD is forging into new territory. We are undertaking new research into air travel at our Laboratory for Design Technologies, creating a professorship in the burgeoning field of urban economics, and promoting the

School's work outside of Gund Hall. We celebrated our annual leadership donors with the first overseas events for the Josep Lluís Sert Council, and we continued to expand our cross-disciplinary initiatives. At the same time, our generous donors renewed commitments to the GSD's Annual Giving funds, which provides critical aid to our students, faculty, and programs.

This year, we also said thank you to Mohsen Mostafavi, who stepped down as dean after 11 years of visionary leadership for the School. We are thrilled to welcome Sarah M. Whiting as dean and Josep Lluís Sert Professor of Architecture, and we look forward to the future she will chart for design education here at Harvard and in communities around the world.

Thank you again for making it possible for the GSD to achieve its mission of using design to build a more sustainable, equitable, and beautiful world.

BRAD QUIGLEY, DIRECTOR OF ALUMNI RELATIONS
& ANNUAL GIVING

KATHAN TRACY, DIRECTOR OF DEVELOPMENT,
MAJOR AND PRINCIPAL GIVING

Students studying in the Frances Loeb Library.

Snapshot

About the GSD

900+

Current Students



50%

international students

50%

female students

26 domestic
option studios

13 global
option studios



13,000+

Alumni



50

US States



21%

live internationally, across 110 countries

Meet the Class of 2019

349

Graduates

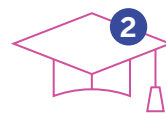
170 graduates from the United States

179 international students from:

China	Spain	Singapore	Lithuania
Hong Kong	Argentina	Turkey	Australia
Korea	United Kingdom	France	Paraguay
Canada	Peru	Brazil	South Africa
Mexico	India	Jordan	Cameroon
Taiwan	Panama	Lebanon	Kenya
Japan	Colombia	New Zealand	Vietnam
Thailand	Kuwait	Germany	Jamaica

364

Degrees Awarded



8 students graduated
with two GSD degrees

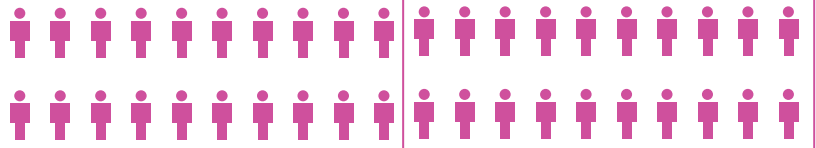


15

graduated with an
additional degree from
another Harvard school

1,200+

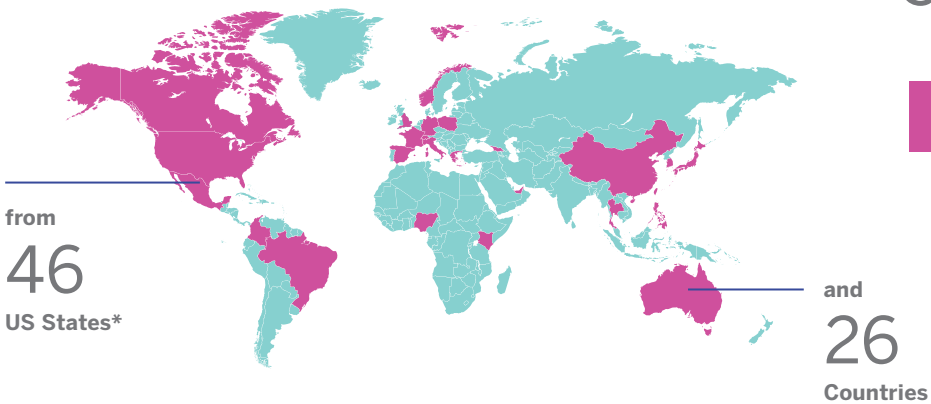
Donors



511

Leadership Giving:
Josep Lluís Sert
Council Members

Largest membership ever!



* Washington DC +U.S. Virgin Islands



\$11.6m+

Donated

\$1.4m+

for financial aid

\$550k

funds from the
Harvard Presidential Match

8 new funds
created to support:



Financial Aid



Faculty



Studios



Research



Making + Creation



Jaline McPherson MLA '21, Natasha Hicks MUP '19, MDes '19, Daisha Martin MUP '20, and Dana McKinney MARCH '17, MUP '17 presented on behalf of the African American Student Union and the Black in Design Conference at Final Revue: Celebrating Mohsen's 11 Years as Dean.

“We give back to Harvard, to the GSD, and to Real Estate, because we want to support continued investment in and growth of this area and in these students. Each of us studied at different Schools, Ameel at HBS and me at the GSD, but we were brought together by the classes, professors, and extra-curricular activities offered across the University in Real Estate. I am especially grateful to the GSD for being central to all of these programs, and most importantly, for teaching all of its students to be thoughtful stewards of the built environment.”

—FAAIZA LALJI MDES '13 AND AMEEL SOMANI MBA '12

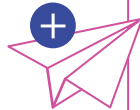
28.3M impressions (times a post is shown across platforms)

Across @HarvardGSD Instagram, Facebook, Twitter, LinkedIn page, and Harvard Design Magazine Facebook

Total Engagement

2,640 messages sent

448k likes, comments & shares



109k Instagram followers

+235% increase (77k net followers gained)

TOP POSTS BY ENGAGEMENT ACROSS CHANNELS FY19

TWITTER



LINKEDIN



FACEBOOK



INSTAGRAM TOP POSTS

1



6,148 engagements

A look inside the final review for the option studio "Natural Monument," led by Mauricio Pezo and Sofia von Ellrichshausen @pezovonellrichshausen. Based on given constraints, students created an inventory of architectonic propositions, a selection of which was developed in pairs through handmade models, drawings, and paintings.

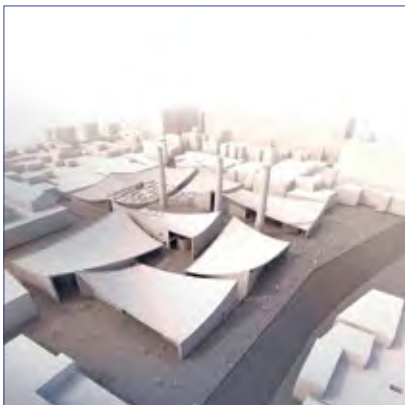
2



5,992 engagements

Mixed Metaphors: The Poetics of Gravity, Machines, and Empathy by Morgan Starkey (MArch '19) — Recipient of the James Templeton Kelley Prize, Masters in #Architecture I. Faculty Advisor: Andrew Holder. Currently on view in the #FrancesLoebLibrary as part of the 2019 Commencement Exhibition.

3



4,909 engagements

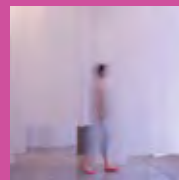
Renderings and site plan by @wilsonharkhono (MArch '19) and @yina.moore (MArch '19) for the project "Journey," part of the spring 2018 option studio "ROOT: Rediscovery of Jingdezhen Contemporary."

ALUMNI TAKEOVERS

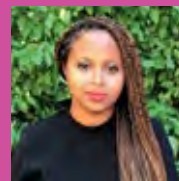
We launched an alumni Instagram takeover series, giving us an inside look at what GSD alums are up to after graduation.



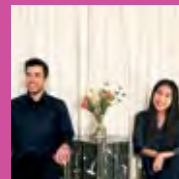
Jerome Byron Hord
MArch '14
Los Angeles



Luisa Brando Laserna
MDes '18
Brooklyn



Sara Zewde
MLA '15
Harlem



Noam Saragosti and Juhee Park
both MArch '18
Los Angeles



Marisa Villarreal
MLA '18
Cambridge



William Baumgardner
MLA '18
Denver



Xiaoyin Kuang
MLA '18
Sausalito

2018–2019 Alumni Events



2018 Reunion attendees posing for a group photo.

22

events led by
alumni ambassadors

1,192

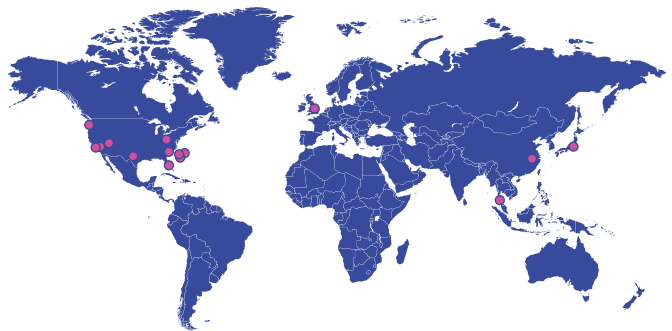
event attendees

40%

of event attendees
traveled to an event

1954

class of
oldest attendee



FY 2018–19 locations:

Philadelphia, PA
New York, NY
Boston, MA
Dallas, TX
London, England
Westminster, CO
Chicago, IL
Los Angeles, CA
Miami, FL
Seattle, WA
Denver, CO
Washington, D.C.
Shenzhen, China

Bangkok, Thailand
San Francisco, CA
Minneapolis, MN
Toronto, ON
Las Vegas, NV
Stanford, CA
Tokyo, Japan

Students interacting with the exhibition *Urban Intermedia: City, Archive, Narrative* curated by Eve Blau and Robert Pietrusko MArch '12 in the Druker Design Gallery.

Stories 2018–19

Advancing GSD Urban Economics

With Generous Gift from **Samuel Plimpton MBA '77, MArch '80**

In December 2018, a gift from **SAMUEL PLIMPTON MBA '77, MARCH '80** and his wife, **WENDY SHATTUCK**, established the Plimpton Professorship of Planning and Urban Economics. The professorship will advance the GSD in the field of urban economics, fundamental for understanding the economics of cities, as well as land use, planning, and real estate decisions in urban areas. As the world's foremost design school, the GSD is a natural home for exploring a range of urban issues and advancing this core field.

The GSD's curriculum in urban economics will include focuses on the components and measurement of successful urban planning and development projects, including: use mix (retail, market and affordable housing, commercial, institutional); the relationships between land use patterns and property values and other metrics of success; transformations in technology and mobility infrastructures; the interactions of metropolitan-scale markets and regulatory institutions and policy; public finance; and the impacts of climate change on public and private sector decisions.

"Investments in cities and the built environment are the driving engine of growth in local, regional, and national economies here in the U.S., and around the globe," said Diane Davis, Charles Dyer Norton Professor of Regional Planning and Urbanism. "If we want to create prosperous futures while also contributing to sustainable urbanism, greater attention to the drivers of urban economies should

be a number one priority, both for the public and private sectors."

As the field of urban economics has evolved in recent years, understanding the cultural context of urban economic growth has become increasingly important. Scholars have examined the role of arts, public space, and leisure activities in place-making, which has inspired new work on how to incorporate these priorities into urban development projects. Along with Davis, Richard Peiser, Michael D. Spear Professor of Real Estate Development, describes the GSD as the perfect environment for synthesizing multiple urban objectives through creative building and urban development projects.

"This position is essential to helping build on the emphasis we've always had in the area of economics as it pertains to all aspects of urban growth and development," Peiser said. "It sends a powerful message to everyone that the GSD would have such a position, as it amplifies our very long tradition of having scholars who teach urban economics."

"Plimpton's long-term loyalty and support of the GSD has been fundamental to the success of the program" Peiser added. "This new position is really central to supporting three of our fundamental teaching disciplines in the Department of Urban Planning and Design: urban planning, economic development, and real estate."



Homa Farjadi, Samuel Plimpton MBA '77, MARCH '80, Diane Davis, Mohsen Mostafavi, and Wendy Shattuck celebrate the establishment of the Plimpton Professorship of Planning and Urban Economics.

“This position is essential to helping build on the emphasis we’ve always had in the area of economics as it pertains to all aspects of urban growth and development. It sends a powerful message to everyone that the GSD would have such a position, as it amplifies our very long tradition of having scholars who teach urban economics.”

—RICHARD PEISER, MICHAEL D. SPEAR PROFESSOR OF REAL ESTATE DEVELOPMENT

Freeing Creativity for Designers of the Future

Fred Chan MAUD '74 Makes Annual Fund Gift

FREDERICK CHAN MAUD '74 believes that the most impactful design happens outside of the studio, and that the most important work of a graduate school is to carry out research that can shape the profession. That deep conviction in training designers of the future led to Chan's generous gift to the GSD's Annual Fund, which will support the School's greatest needs.

"Harvard has been a wonderful place and experience for me," Chan said. "I learned at the school that the tuition we pay is about one-third of the cost of educating a student. Therefore, I think it's important that after we leave, we continue to support education to make it

possible for the next generation, both in terms of financial aid and continuing participation in the school's programs so we can learn from each other. Students are more creative when they're not constrained."

Chan, who describes himself as semi-retired and splits his time between Hong Kong and Bangkok, had a successful career in architecture and development. He was Managing Director at FMC Group, and president and chief executive officer at NuWest Group. In addition to his Master of Architecture in Urban Design from Harvard, Chan also holds a bachelor's degree in architecture from the University of California Berkeley.



Frederick Chan MAUD '74 speaks to a crowd of alumni and friends at an event in Bangkok.



Yuqiao Guo MArch '19 presents during the final review for the fall 2018 option studio "UTOPIA/DYSTOPIA: Living Post-Work," led by Annabelle Selldorf (pictured on the right).

His experience at Harvard, including a class with **MORTIMER B. ZUCKERMAN LLM'62**, and his varied background, have cultivated Chan's appreciation for the GSD's multidisciplinary approach, especially the GSD's collaboration with the John A. Paulson School of Engineering and Applied Sciences.

"Design is no longer a profession by itself, and urban problems or problems in modern society can't be tackled by one discipline," Chan said. "Issues are so complicated and specialized, and you can't design in a vacuum. Training in design should enable the student to learn how to work and collaborate with people from different fields."

"I have always thought that design should be part of the core educational curriculum in our schools along with language skills and math," he continued. "We can use design as a way both to learn and come up with solutions and communicate with others. In an increasingly visually-oriented world, design is taking on a more important role."

"I have always thought that design should be part of the core educational curriculum in our schools along with language skills and math. We can use design as a way both to learn and come up with solutions and communicate with others. In an increasingly visually-oriented world, design is taking on a more important role."

Even a world away from Cambridge, Chan maintains his connections to the GSD in several ways: speaking to students, watching every commencement speech, and reading the Harvard Gazette every day. He has also participated in GSD seminars in Asia, such as a waterfront study in Hong Kong and a design review in Shanghai, and praised the GSD's efforts to connect with alumni in the region.

"I love having the chance to talk to a lot of young students and get involved in the studio projects," Chan said. "I find it very fascinating. It's almost like I'm going back to school again."

Find Love. Give Back.

Kay O'Neil MCRP '78 and David Nelson MCRP '78 Make Generous Gift to The GSD

Statistical analysis and love don't usually go together, but **KAY O'NEIL MCRP '78** and **DAVID NELSON MCRP '78** have found happiness and success with this unique pairing.

The couple, who met in a quantitative analysis class at the Harvard University Graduate School of Design, have been together for 42 years. They are thankful to the GSD both for the foundational skills it provided in urban planning and for bringing them together. It was out of that sense of gratitude that Kay and David made a generous gift to the school. They provided it through their life insurance policy, through which they designated the beneficiaries—including the GSD—and the amounts. This planned gift makes them members of the H. Langford Warren Society, and they also give to the GSD as members of the Josep Lluís Sert Council.

"Harvard has always been training talented people in a way that will allow them to make changes and contribute to society in remarkable ways," David said. "We were very happy at the GSD, and we've

been very happy together for the last 42 years. It was a wonderful experience, and we want others to have it."

"I couldn't have gone to Harvard without financial aid," Kay added. "It's important to us to give back and give forward so that people who might find attending Harvard a challenge can have that opportunity. The students are interesting, fascinating people."

Both Kay and David went on to careers in public transit, focusing on subways and commuter railroads. Kay credits the GSD with providing the confidence and skills she needed to launch her own company, KKO and Associates, in 1984. That company, which David also worked for, offered software and planning services for public transport and commuter rail systems domestically as well as overseas, including Poland, Argentina, and South Africa.

Kay closed the company in 2015 and now works at Keolis, a French company that operates the Massachusetts commuter rail system. David is at Jacobs Engineering, a large engineering firm, working in Boston, New York, Chicago, Philadelphia, Los Angeles, and Miami on their ambitions for expanding public transit.

This unique giving mechanism provides a simple, impactful way for Kay and David to support the passion, engagement, and initiative of GSD students—qualities that the two of them have carried forward in their careers since leaving campus.



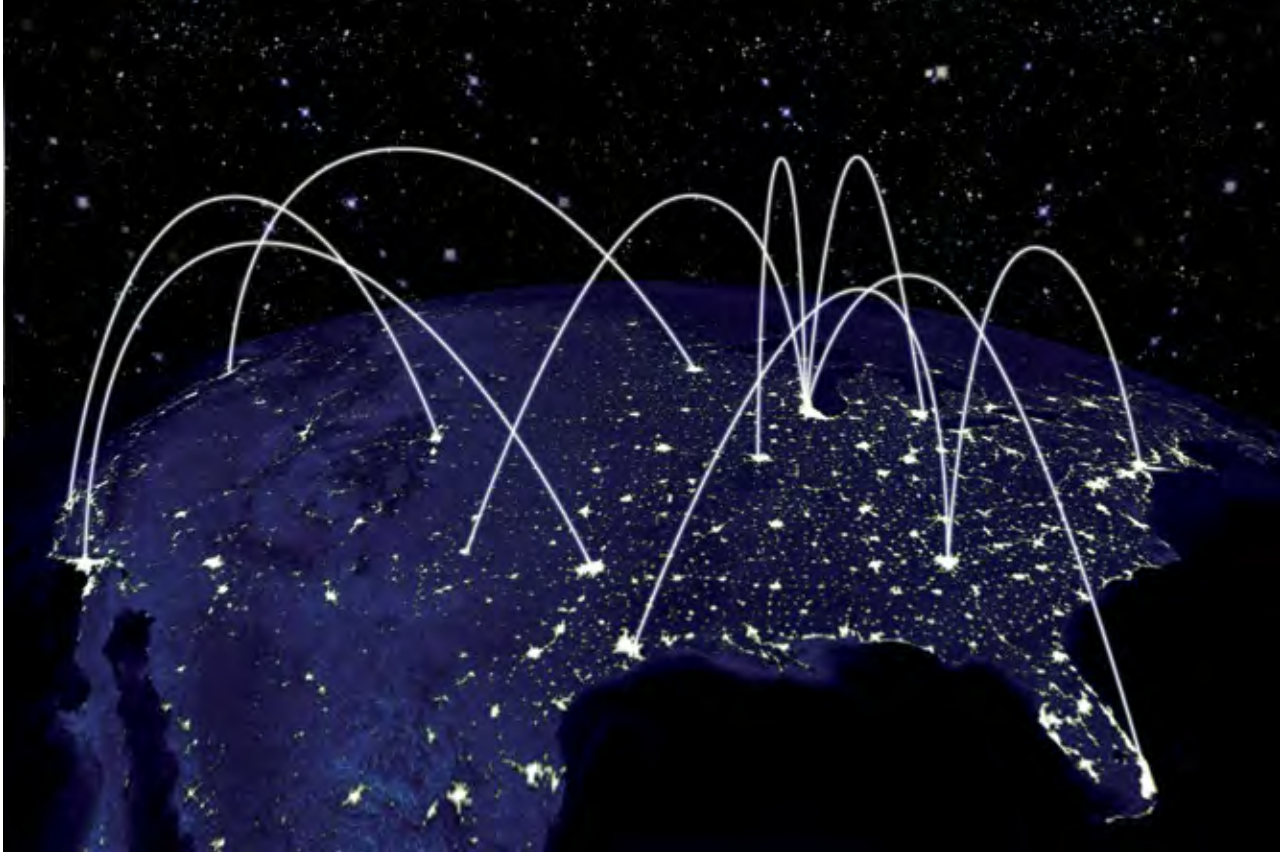
Kay O'Neil MCRP '78 and David Nelson MCRP '78



Jenjira Holmes MLA '19 and Phia Sennett MLA '19 presenting during the final review for before the spring 2019 option studio "The Monochrome No-image," led by Rosetta S. Elkin.

"I couldn't have gone to Harvard without financial aid. It's important to us to give back and give forward so that people who might find attending Harvard a challenge can have that opportunity. The students are interesting, fascinating people."

—KAY O'NEIL MCRP '78



3D render of global flight paths depicted at night.

Technologies Take Flight For Future of Air Travel

Industry Advisors Group Supports GSD's Laboratory for Design

With industry leaders—including Boeing and Clark Construction—and world-class academic researchers joining forces, the Harvard University Graduate School of Design's Laboratory for Design Technologies is undertaking its first project: "The Future of Air Travel."

The growing need for a more integrated approach to flight and urban environments dovetailed with the mission of the Laboratory for Design Technologies (LDT), a shared platform for the GSD's design technology research units and

faculty. The LDT aims to advance understanding of how design technologies can improve the human condition; as a key part of achieving that goal, the GSD is inviting leading companies to join the LDT Industry Advisors Group.

The group, which also includes, Hickok Cole, Massport, Perkins&Will, and Architekten von Gerkan, Marg und Partner, links businesses and government stakeholders with academic researchers to shape the future of the built environment. Researchers and industry experts

will undertake two focus areas related to “the Future of Air Travel”: exploring the relationship between air infrastructure and its city and regional hosts, and examining the human experience in air travel.

“How can we shape the future of flight, while addressing the dilemma of sustainability and the enormous growth prediction of air travel?” said Kumagai Professor of Architectural Technology **MARTIN BECHTHOLD DDES '01**, who heads the Laboratory’s Materials Processes + Systems unit. “Combining the GSD’s strength in design research and computational simulation, we hope to help promote the next generation of aerospace technology by investigating both the human experience as well as the regional mobility interactions on the ground and in the air.”

For Boeing, joining this research initiative was a natural fit. In 2018, the aviation pioneer formed Boeing NeXt, an organization leading the company’s efforts around future mobility. Expanding airspace access for autonomous vehicles has both regulatory and technical challenges, and Boeing sees opportunities for solutions in this partnership with the GSD.

“These societal and technological trends are tangible and measurable, and they are converging to define a new vision for the future of mobility,” said Egan Greenstein, Boeing NeXt senior

director. “We are excited for this collaboration that will help bring this vision into focus.”

As a builder for both airports and airlines, Clark Construction Group is excited to support the development of design technologies that will enhance the air travel experience. Clark sees “the Future of Air Travel” project as a way to elevate airport and air travel design practices, which lead to innovations in airport construction.

“Clark is excited to collaborate with the GSD and forward-thinking industry leaders to help develop the most advanced thinking and design technologies in holistic, value-based, asset creation solutions,” said Clark’s vice chairman, William R. Calhoun, Jr. “The partnership will enable us to explore the benefits of thinking beyond first cost criteria by encouraging an active dialogue that considers life cycle cost, future facility flexibility, alternative economic modeling, increased sustainability and resiliency, and integration of facilities with their communities and local infrastructure.”

The future of air travel isn’t a concept that one discipline or one sector can solve alone, which is why the GSD aims to unify industry leaders as they reimagine air travel. The LDT’s framework enables creative partnerships that can look to the skies, providing better chances of finding solutions to the complex challenges of air travel and beyond.

“Combining the GSD’s strength in design research and computational simulation, we hope to help promote the next generation of aerospace technology by investigating both the human experience as well as the regional mobility interactions on the ground and in the air.”

Helping Students Realize Their Visions Beyond The Walls of Gund Hall

Melissa Kaish GSD '85 and Jon Dorfman Donate to the GSD

As the child of artists and an artist herself, **MELISSA KAISH GSD '85** grew up with painters, musicians, and writers gathering at her home for creative discussions. For her, art and design are not bound by walls; these disciplines can—and should—spill into the public sphere for the community's benefit.

With that value in mind, Kaish and her husband, Jon Dorfman, made a generous gift to the GSD, which will support a built project on Harvard's campus through the School's Art, Design, and the Public Domain (ADPD) program. Kaish's main goal: promote the GSD's creative work beyond the walls of Gund Hall.

"It's really about developing the life of the arts throughout the campus," said Kaish, who attended the GSD before earning her MBA from Columbia University. "I love the idea of a merit-based award that would enable students with the absolute best ideas to have an opportunity to implement them on campus, and that the Harvard community and beyond will benefit."

Kaish's inspiration came from past philanthropy with the School and the One Harvard campaign, which she said allowed the GSD to broaden its impact on the community. Kaish had provided a gift for the Philip Johnson Thesis House, supporting the vision of the space as a gathering

Melissa Kaish GSD '85 and Jon Dorfman pictured in the Kaish family studio before a collage by Luise Kaish titled "Poet in Two Worlds."





WE ALL, designed by Francisco Alarcon MDes '18, Carla Ferrer Llorca MDes '17, and Rudy Weissenberg MDes '18, debuted in September 2017 at The Grove in Allston.

place for designers. She and Dorfman became drawn to ADPD through “WE ALL,” a student design-build installation at the Grove in Boston’s North Allston neighborhood.

“What impresses us most about the School is the breadth of degree options and international studio options,” Dorfman said, pointing to the GSD’s increased global presence. “You can study design issues around the world, and I think that makes it very, very powerful.”

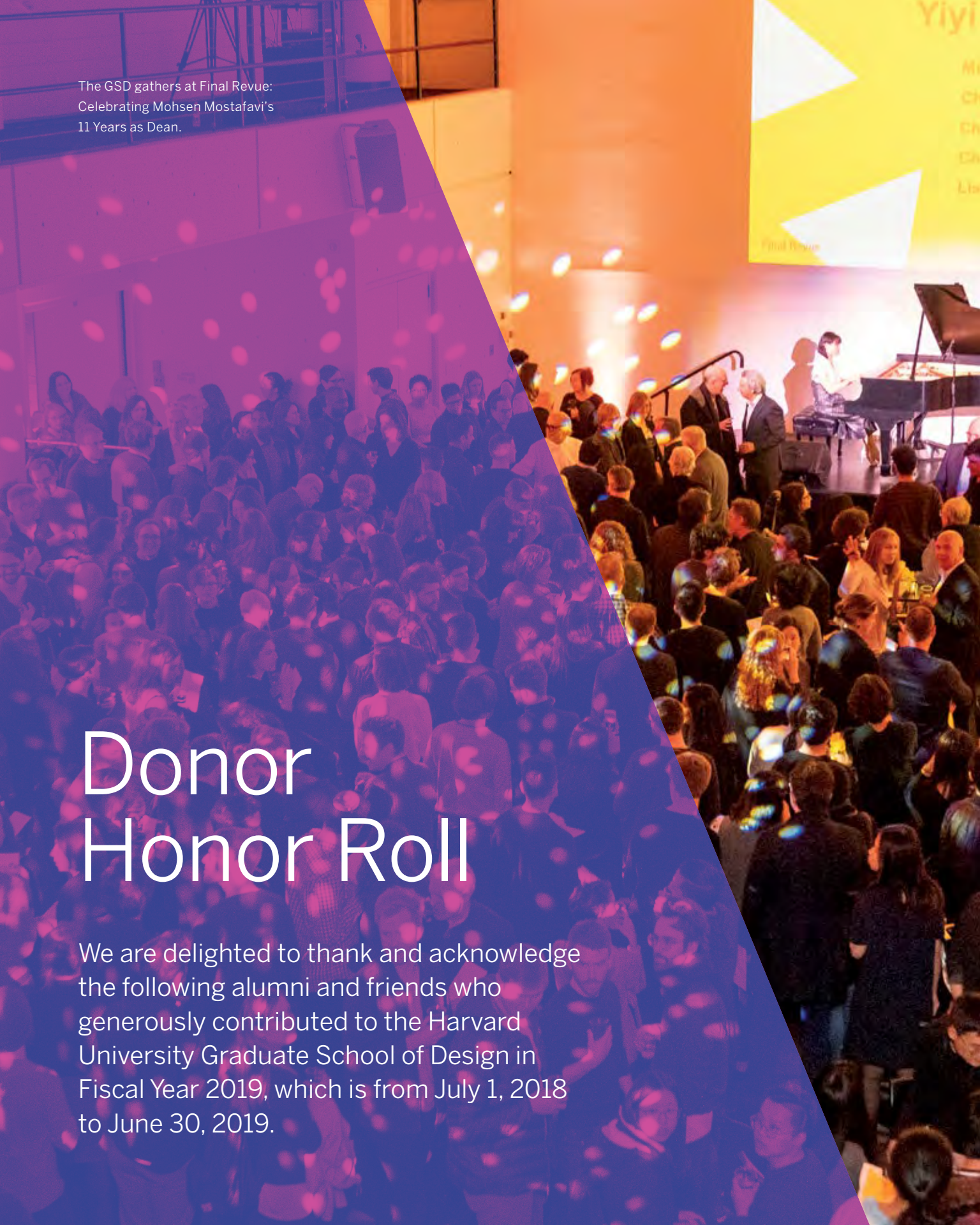
“The School is now much broader,” Kaish added. “It’s reached out to the university in different ways, such as technology, sustainability, and social equity. The new joint degree with the engineering school is a bold move. It is becoming increasingly important to integrate architecture with engineering and technology.”

As Kaish supports designers of the future, she is also exploring her own creative past through the

Kaish Family Art Project and an upcoming book about her late mother. The project’s mission is to promote and exhibit the work of her parents, Luise and Morton Kaish. “I’m learning a lot about the art world I didn’t know, beyond my easel,” Kaish said with a laugh.

The far-reaching impact and evolution of her parents’ art mirrors what Kaish has observed and hopes to see continue at the GSD. “For me, I think, what opportunities are we giving to students to be able to realize their visions?” she said. “The idea is that the GSD will have an impact beyond itself.”

“What impresses us most about the School is the breadth of degree options and international studio options,” Dorfman said, pointing to the GSD’s increased global presence. “You can study design issues around the world, and I think that makes it very, very powerful.”



The GSD gathers at Final Revue:
Celebrating Mohsen Mostafavi's
11 Years as Dean.

Donor Honor Roll

We are delighted to thank and acknowledge the following alumni and friends who generously contributed to the Harvard University Graduate School of Design in Fiscal Year 2019, which is from July 1, 2018 to June 30, 2019.

Josep Lluís Sert Council

The Josep Lluís Sert Council is a community of annual leadership donors who are committed to supporting the Harvard University Graduate School of Design, its students, and the future of design education. Sert Council members play an integral role in advancing the GSD's preeminent status by providing essential funding to support our students, faculty, and degree programs. Sert Council members make annual leadership contributions starting at \$1,000 (with adjusted levels for recent graduates).

Members of the Josep Lluís Sert Council are listed below by the following membership tiers: Dean's Circle, Principal, Partner and Associate.

Sert Council Dean's Circle (\$25,000+)

Anonymous (2)
Irwin M. Braverman AB '51
Joseph E. Brown MLAUD '72 and
Jacinta McCann
Bridget Colman and
Mark M. Colman AB '83, MBA '87
Wright Dickerson
Sanford Edward MDes '88
Bil Ehrlich BArch '67
Roger P. Ferris LF '92, MDes '93
Philip G. Freelon LF '90†
Philip L. Harrison AB '86, MArch '93 and
Susan Stainback MLA '85
Thomas C. Holtz MArch '77
John K. F. Irving AB '83, MBA '89 and
Elizabeth Irving

Carola Jain
Wendy Evans Joseph MArch '81
J. W. Kaempfer, Jr. MBA '71
Melissa H. Kaish GSD '85 and
Jonathan L. Dorfman
Scott Mead AB '77
Angela Y. Pang MArch '02 and
Seng Kuan AB '98, MUP '04, PhD '11
Samuel Plimpton MBA '77, MArch '80
and Wendy Shattuck
Steven D. Plofker MCRP '80 and
Bobbi B. Plofker
Moshe and Michal Safdie
Bonnie Sellers MLA '75 and Gary Sellers
Julia Stoschek
Tadashi Yanai

Sert Council Principal (\$24,999–\$10,000)

Hagy Belzberg MArch '91
Frederick Man Hin Chan MAUD '74
Nelson K. Chen AB '75, MArch '78 and
Margaret W. Wong
Son Meng Chiang AMDP '10
Peter R. Coombe MArch '88 and
Betty Y. Chen AB '87
Lawrence H. Curtis MAUD '83 and
Marla G. Curtis
Ronald M. Druker LF '76 and
Julie Druker
Timur F. Galen and Linda Genereux
Ralph E. Graham (Reggie) MArch '78
Graham D. Gund MArch '68, MAUD '69
and Ann L. Gund
Shoichi Kajima MArch '57
Timothy Gus Kiley MTS '95
Geoffrey R. Le Plastrier MArch '75
Brian D. Lee MArch '78 and
Wendy Szeto Lee
James R. McKinney AMDP '03
Toshiko Mori
William Poorvu MBA '58
Craig Robins
Tori Winkler Thomas MLA '82

Sert Council Partner (\$9,999–\$5,000)

Steven H. Brubaker MArch '75
John di Domenico MAUD '79
Katherine Dillon MAUD '86 and
Jeffrey A. Murphy MArch '86
Michael F. Doyle MArch '77
Leon W. Drachman MAUD '93
Eric Hadar
Gary R. Hilderbrand MLA '85
Jeffrey S. Horowitz MArch '78
Jerold Kayden AB '75, MCRP '79,
JD '79 and Stephanie Kayden
AB '95, MPH '06

Michael B. Lehrer, FAIA, MArch '78 and
 Mia G. Lehrer FASLA, MLA '79
 David M. Leventhal '71, MArch '78
 Brenda A. Levin, FAIA, MArch '76
 Gerald M. McCue
 Brooks A. Mostue AB '69, MArch '76 and
 Patricia M. Mostue CAS '72
 Sakura Namioka MAUD '70
 Tommy Watari Pao MArch '11
 Dennis Pieprz MAUD '85
 William G. Roberts M.D. AB '79 and
 Cynthia V. Roberts
 Mark Louis Schmid MArch '74
 Kevin B. Sullivan MArch '94
 Stones Tse AMDP '11
 Rudy F. Weissenberg MDes '18 and
 Rodman A. Primack

The first student-led installment of the *Platform* series, *Platform 11: Setting the Table*, curated by Esther Mira Bang MArch '18, Lane Raffaldini Rubin MArch '10, MLA '19, and Enrique Aureng Silva MDes '18, transforms the Druker Design Gallery.

Sert Council Associate (\$4,999–\$1,000)

Anonymous (3)
 Sang Hyun Ahn MAUD '00 and
 Woon-Hyoung Lee
 Herman Yuk-Man Au MArch '73
 Brian A. Aviles MLA '89
 David Y. Bae MArch '97
 Paul L. Baird MArch '95
 Joan Lamb Baldwin
 Andres Batista MArch '95
 Saturnino Belen AMDP '13
 Carolyn D. Bemis MArch '93
 Richard Bender BArch '56
 Harold R. Benson AB '52, MArch '56
 James Benton AMDP '15
 Anita D. Berrizbeitia MLA '87
 Kathryn McGraw Berry
 John H. Beyer MArch '61
 Lucia Bogatay MArch '69
 Afshan Bokhari MDes '97
 Michael S. Boucher MLA '85
 Christopher A. Bourassa AMDP '09
 Uwe S. Brandes MArch '95

Barry L. Brensinger MArch '76 and
 Caryl S. Brensinger
 Jacolyn and John Bucksbaum
 Jean E. Poor Burden GSD '74 and
 Ordway P. Burden AB '66, MBA '68
 Laura C. Burnett MLA '86 and
 Martin K. Poirier MLA '86
 Peter B. Calkins MArch '81 and
 Susan Casey EDM '86
 Mark D. Careaga MArch '98 and
 Allison Crosbie
 John O. Carney, Jr. MArch '77
 Taewook Cha MLA '98 and
 Jeong-Ah Choi MUP '99
 Cheryl W. Chan MArch '04
 Florence L. Chan MArch '02
 Michael Cheung-Foon Chan MArch '75
 Holley Chant ALM '11
 Teerawut Chanyasak AMDP '15
 Justin Marc Chapman MDes '12 and
 Randi Chapman
 Jay Chatterjee MAUD '65
 James K. M. Cheng MArch '77
 Nathan B. Cherry MAUD '93
 Hongchee J. Chiu MArch '03





Michael Maltzan MArch '88 (right) hosted Josep Lluís Sert Council members at his office in Los Angeles to celebrate the appointments of Mark Lee MArch '95 and Sharon Johnston MArch '95 to the GSD Architecture department.

Alexander F. Chu MAUD '73 and

Irene C. Chu

Alan B. Chun MArch '96 and

Monica Figueiredo

Megan Mann Clark MLA '00

Max Z. Conrad MLA '63

Sekou G. Cooke MArch '14

Oliver Cope AB '80, MArch '85

Leland D. Cott MAUD '70

Rob Coulson AMDP '17

Anne D. Cowie

Collette A. Creppell AB '82, MArch '90

Sherrie Stephens Cutler, AIA, MArch '66,
MAUD '67

Bruce Skiles Danzer, Jr., AIA LAB[3.2]
Architecture

Joao B. DaRosa AMDP '09 and

Elsie DaRosa

Peter Y. Davos MDes '09

Robert F. Daylor LF '77

Jeff DeGregorio

Franklin E. Dickinson AMDP '02

Stephen M. Dietz MArch '94

Amy Knoblauch Dubin MCP '76

Michael V. Dyett AB '68, MRP '72 and
Heidi Richardson

Amy C. Edmondson AB '81, AM '95, PhD
'96 and George Q. Daley AB '82, MD '91

William H. Fain, Jr. MAUD '75

Doreen Fan MArch '57

Mary Farrell AMDP '07

Mark L. Favermann MCRP '78

Moe Finegold AB '54, MArch '58

Nils C. Finne MArch '80

Scott Fiorentino AMDP '15

Richard T. T. Forman AM '84

Geoffrey T. Freeman MLA '68, MArch '71

John T. Friedman MArch '90 and

Alice Y. Kimm MArch '90

Joseph K. C. Fung MArch '80

Henryk Gaertner AMDP '15

William J. Gallo MArch '70 and

Susan N. Gallo

Elie J. Gamburg MArch '08

Cliff Garten MLA '97

Molly Daly Gerard MLA '86

Donald E. Gibson MArch '98 and

Sharon W. Gibson AB '97

Elizabeth E. Gilbert MLA '93 and

Shaun L. Donovan AB '87, MArch '95,
MPA '95

Elise R. Gispan MArch '86

Deborah Goddard LF '03

Geoffrey Goldberg MArch '82

Andrew Goldman MArch '72 and

Stewart Weinstein

Marc Goldstein AMDP '13

Frank J. Greene GSD '80

Timothy P. Greer MArch '82

William R. Hammer MAUD '68 and

Nancy Hammer

Mahn Kon Peter Han MArch '01

Steven N. Handel and Joan L. Handel

Channing C. Harris MLA '82

William S. Harris MArch '79 and

Marcia Harris

Scott Heigelmann

Allison Held AB '91

Karen Herskovitz MLA '93

Kevin Hirai AMDP '18

Ching-Hua Ho

Chi-Wing Henry Ho MCPUD '70

Mary Ann Hoberman

D. Brooks Holstein AMDP '05

Douglas R. Horne MLA '78

Michael L. Horst LF '82 and

Laurie Beckelman LF '88

Tony Hsiao MArch '84

Hui-Mei E. Huang MDes '96

Xiaofeng Huang MLA '07 and Xia Peng

Scott B. Hunter MArch '97

Robert A. Hutchins AB '62, MArch '65

Nicholas Jay Iselin AB '87, MArch '92

Robert S. Jamieson MArch '79

Deepa Janha AMDP '17

Karen A. Janosky MLA '91 and

David A. Schappell

Marc Jason AMDP '06

Pliny Jewell AB '54, MLA '59

Day J. Jimenez MArch '11 and

Mariela A. Toro MArch '11

“I wholeheartedly believe in the transformative power of good design in all aspects of life. Supporting the mission of the GSD is assuring that future generations can experience and contribute to the evolving practice of design. The GSD is one of the world’s most dynamic communities peopled by international thinkers, makers, and doers.” —RUDY WEISSENBERG MDES '18

Carrie A. Johnson MArch '93
 Gary C. Johnson MAUD '78
 Mark R. Johnson and Nicole J. Ullrich
 Ralph E. Johnson MArch '73 and
 Kathleen S. Nagle MArch '87
 Scott Johnson MArch '75
 Susan H. Jones MArch '88 and
 Marco J. Zangari
 Raphael T. Justewicz MLA '97
 Jaya Kader MArch '88
 Shiraz R. Kaderali MCPUD '72
 Jonathan R. Kanda MArch '96 and
 Christel Kanda
 Gary E. Karner MLA '61 and
 Pandora Nash-Karner
 John Joseph Kelleher MLA '71
 Emanuel Kelly MCPUD '74 and
 Dyan D. Kelley
 Steven R. Kersey MArch '86
 Eric R. Keune MArch '97
 Bradley G. Khouri MArch '96
 Matthew J. Kiefer LF '96 and
 Nancy E. Porter
 Karen S. Kiest AB '80, MLA '88
 Charles S. Klee
 Barry J. Korobkin MArch '76 and
 Laura H. Korobkin JD '80, PhD '94
 Alex Krieger, FAIA, MCPUD '77 and
 Anne W. Mackin MLA '86
 Ding On Kwan MArch '75, MAUD '76
 Faaiza Lalji MDes '13 and
 Ameel Somani MBA '12

Alven H. Lam DDes '89 and Betty Lam
 Richard K. Law MLA '65
 Chao-Chiung Lee AMDP '09
 David Lee MUP '13
 Frank C. Lee, FAIA, MAUD '79
 Richard J. C. Lee MArch '95 and
 Katherine S. P. Lee
 Fernando Daniel Levy Hara AMDP '09
 Kenneth A. Lewis MArch '85 and
 Jennifer O. Lewis
 Vibeke Lichten AMDP '06 and
 Joel Assouline AMDP '07
 Constance J. Lieder MCP '60

Edwin E. Lim MArch '94
 Ann Lin AB '90, MArch '94
 Nancy F. Lin MArch '97
 Helen Lochhead LF '14
 Jessica P. Lohnes MAUD '95
 James A. Lord MLA '96
 Andrea Love
 Anne-Marie Lubenau, FAIA, LF '12
 Jennifer Luce MDes '94
 Thomas E. Luebke, FAIA, MArch '91
 David J. Luebke MArch '73
 Jair Lynch LF '06
 Nancy L. Mack MArch '99



Grace La AB '92, MArch '95 gestures to a model during the final review for the fall 2018 option studio *The Future Provincetown 1*, led by Preston Scott Cohen MArch '85 (right).

Betsy Ridge Madsen EDM '73
 Peter E. Madsen AB '67, MArch '72
 Patrick Maguire MLA '94
 Michael T. Maltzan MArch '88 and
 Amy Murphy
 John A. Mann MUP '01
 Alan Mark AMDP '18
 Richard A. Marshall MAUD '95
 Amanda Martocchio MArch '90
 Dion P. McCarthy MArch '89 and
 Anjani Mandavia
 Cara McCarty LF '05
 Margaret I. McCurry LF '87
 Susan C. McKeefry MLA '96
 Charles E. McKinney LF '94 and
 Susan Chin LF '00
 D. Scott McLain AMDP '06
 Edward McNamara LF '95
 Joy R. Meek MArch '98 and
 Jamie D. Cook MArch '99
 Donald E. Meyer BArch '66
 Alexander Mezhevidze AMDP '05
 Shunsaku Miyagi MLA '86
 Rod Mullice AMDP '14
 Roberta Mundie AB '66, MCP '70
 Michael M. Murray MArch '93
 Mary Eugenia Myer AB '60, MLA '77 and
 Theodore H. Myer AB '59
 Henry I. Myerberg MArch '80
 Mike Nelson AMDP '17
 David T. Netto GSD '97
 Taslim Ngom AMDP '17
 Riki Nishimura MAUD '03
 James J. O'Hara MArch '73† and
 Mary J. O'Hara
 Donatus C. I. Okpala MRP '74
 Martha A. O'Mara MBA '85, AM '89,
 PhD '90
 Kay O'Neil MCRP '78 and
 David Nelson MCRP '78
 Katherine Orff MLA '97
 Osadede Osakwe AMDP '08
 C. Ron Ostberg MArch '68 and
 Susan C. Ostberg JD '73



Sid Yog MBA '04 (center) with Karan Saharya MDes '20 and Vaissnavi Shukl MDes '20 at the Fellowship Dinner.

Etty Padmodipoetro LF '06 and
 Joseph Allegro
 Michael J. Palladino MArch '79 and
 Carol Palladino
 Anthony L. Pangaro MArch '69, LF '75
 and Creelea H. Pangaro
 David J. Parsons AB '63, BArch '67 and
 Jutta K. Parsons
 Nerali Patel MUP '18 and
 Pratik Kiran Panchal MPH '15
 Tom Pen MArch '00
 Kathleen J. Perkinson AMDP '10
 Michael Peters AMDP '15
 Ana Pinto Da Silva MDes '05
 Thomas H. Platz AB '73, MArch '80
 Linda Pollak MArch '85
 Jill Porter MArch '00
 James Pratt MArch '53† and
 Joanne Henderson Pratt AM '50
 William Prince MArch '00 and
 Lizzie Widdicombe
 Thomas H. Pritchett MLA '81
 Emily Rauh Pulitzer AM '63
 Jiayu Qin MLA '11 and Wei Pu
 W. Oliver Radford MArch '86
 Nancy Ranney AB '72, MLA '77
 Jerome L. Rappaport AB '79, GSD '80,
 MCRP '81

William L. Rawn III JD '69
 Douglas P. Reed MLA '81
 John S. Reed AB '56, MCP '58, GSA '73
 Mark S. Reed MArch '92 and
 Stephanie E. Goldberg MArch '93
 Robert L. Reiner MCRP '81
 Emily J. Sano & Gilson S. Riecken
 Charitable Fund
 Dale E. Riedl MArch '96
 Jason Y. Ro MArch '06 | Ro Rockett
 Design
 Zachary S. Rockett MArch '06 | Ro
 Rockett Design
 Peter G. Rolland MLA '55
 Benjamin T. Rook MDes '90
 Catherine M. Rose AB '92
 Robyn Morgenstern Rosenblatt
 MArch '97
 Martha Leibowitz Rothman MArch '65
 and Elliot Paul Rothman MCP '60,
 MCPUD '61
 David A. Rubin MLA '90
 Frank Ruchala MArch '05, MUP '05 and
 Philippa Brashear AB '01, MLA '07,
 MUP '07
 Peter Ruggiero MAUD '84
 Paris M. Rutherford MAUD '93
 John M. Sanger AB '65, JD '68, MCP '70

William S. Saslow MAUD '71, MBA '71
 Robert Schaeffner
 Karl Otto Schmid MAUD '61
 Mark B. Scott AB '01, MArch '06 and
 I-Ching Katie Scott March '07
 Len Shannon AMDP '15
 Lewis W. Shaw AMDP '03
 Bryan R. Shiles MArch '87
 Robert W. Shinbo MLA '73 and
 Sharron Shinbo
 N. Reed Shinn, AIA, MArch '66 and
 Mary P. Shinn
 Julia S. Shuart MLA '07 and
 Frederick H. Shuart III
 Richard S. Sickeler MArch '85
 Cathy J. Simon MArch '69 and (George)
 Michael Palmer AB '65, AM '68
 Scott M. Simpson MArch '75 and
 Nancy E. Kuziemski MAT '72
 Jason PC Smith AMDP '14
 Lindsay M. Smith MArch '99
 Lisa W. Speltz AMDP '10
 Lionel B. Spiro AB '60, MArch '63 and
 Vivian K. Spiro

Eric L. Stengel MArch '89 and
 Christine Stengel
 James G. Stockard, Jr. MCP '68, LF '78
 and Susan Stockard
 Tim Stonor LF '11 and Anna Stonor
 Hugh John Sullivan MArch '78
 Paulett L. Taggart MArch '84
 Manjeet K. Tangri MArch '74
 Warren A. Techentin MArch '95,
 MAUD '95 and Mimi W. Techentin
 Nader Tehrani MAUD '91
 Robert L. Tiscareno MAUD '89
 Sarah E. Tombaugh MArch '00 and
 Douglas Vanderpool
 Donald H. Tompkins MLA '62
 Kathan Tracy
 Juan Carlos Vargas Moreno MDes '04,
 DDes '08
 James R. Vaseff LF '84
 Peter Vieira
 Michael Vinh MArch '02
 Paul E. Voelckers MArch '81
 Charles W. von Weise MArch '94
 Sameh N. Wahba MUP '97, PhD '02,

KSGEE '13 and Maria Raquel Nunes
 Marc J. Watkins AMDP '06
 Robert E. White, Jr. MArch '90
 Allison Grace Williams LF '87
 Deborah L. Wilson MCRP '79
 James Thompson Wilson, Jr. MArch '93
 Nick Winton MArch '90
 Dianna Wong AB '78, MArch '83
 John Lap Wong MLAUD '78 and
 Mildred Sum-Wong
 Anna A. Wu MArch '84 and
 George A. Truskey
 Douglas Wu MArch I '10
 Yue Wu DDes '02
 Wanli Xiong MUP '05
 Shao Xing Max Yang AMDP '18
 Yoshinori Yokoyama MAUD '72
 Kristina H. Yu MArch '95 and
 Raimund McClain MArch '00
 Kun Yu MAUD '85
 Cyrus Zadeh AMDP '18
 Shay Zak MArch '86
 Corey A. Zehngbot MArch '09 and
 Adam A. Friedman PhD '07, MD '09

Daisha Martin MUP '20 discusses *Race and Space* in the Boston portal of the exhibition led by Stephen Gray MAUD '08 of the *Urban Intermedia: City, Archive, Narrative* exhibition curated by Eve Blau and Robert Pietrusko MArch '12.



Xiao Han MArch '19 and Ningxin Cheng MArch '19 perform in "Space, Movement, and the Technological Body: A Tribute to the Bauhaus," developed in the spring 2019 option studio "Entanglement of Movement and Meaning: The Architect, Spatial Perception and the Technological Body" led by Krzysztof Wodiczko and Ani Liu, featuring choreography by dance scholar Debra McCall in celebration of the 100th anniversary of the Bauhaus School of Design.



Sert Council Associate (Recent Graduates; \$999–\$100)

Paola Aguirre Serrano MAUD '11
Matthew Allen MArch '10, PhD '19
Joaquim Azevedo AMDP '14
William S. Baumgardner MLA '18
James Cody Birkey MDes '13
Kaley Blackstock AB '10, MArch '15
Heather E. Boesch AB '02, MArch '09
and Jeffrey R. Olinger MArch '09
Robert N. Bracken MAUD '11
Scott A. Campbell LF '15 and
Rachael Campbell
Suzanne Lanyi Charles MDes '05, DDes '11
Meredith Rae Chavez MLA '19, MAUD '19
Hyun Choi MDes '14
Do Young Chung MArch '09
Timothy P. Clark MLA '17
Ryan E. Dings MDes '11

Christian Ervin MDes '13 and
MK Smaby MLA '13
Derek R. Galey MUP '14, JD '14
Maria Galustian MArch '12
Rickie Joanna Golden MDes '12
William Scott Goodman MUP '09
Mary Elizabeth Gourlay MLAUD '10
Chris Grenga MArch '19
John Herron, Jr. MPA '03, MDes '06,
DDes '11
Vincent Jiang MDes '17
Nikolaos Katsikis DDes '16 and
Natalia Renia Kagkou MAUD '18,
MDes '18
Braham B. Ketcham MUP '10
Ranjit John Korah MArch '16
Cynthia Hok-Yin Kwan MDes '09
Tatum An Yu Lau MAUD '19
Paul A. Lillehaugen MUP '16
Evan B. Linkner ALM '09, MDes '11
Zechariah David Lockrem MUP '10
Peter Changsoo Park MAUD '10
Laura Stacy Passmore MLA '18

Yuzhou Peng MAUD '19
Jane Philbrick MDes '16
Ryley A. Poblete MArch '14
Gil Prado AMDP '14
Marysol Rivas Brito MArch '17
Lane Raffadini Rubin MArch '19, MLA '19
Gaby R. San Roman Bustinza MAUD '16
Noam Saragosti MArch '18
Hyeji Sheen MAUD '18
Rodrigo Sole MUP '18
Sol Andrew Stokols MUP '17
Man Su MAUD '16
Kelvin Teo MDes '10
Richard Tolliver AMDP '14
Izgi Uygur MLA '18
Na Wang MLA '18
Aaron Wasserman MUP '11
Timothy Donald Webster MLA '19
Simon Willett MAUD '14
Corey C. Wowk MDes '12
Jia Yi Xia MDes '17
Sara Zewde MLA '15
Jingyi Zhang MPP '11, DDes '18

Sert Council events highlight GSD alumni, faculty, and programming around the world

The Josep Lluís Sert Council is a community of annual leadership donors who are committed to supporting the GSD, its students, and the future of design education. Sert Council members play an integral role in helping to advance the GSD's mission of providing essential funding to support our students, faculty, and degree programs.

During the 2018-2019 year, the GSD hosted six (four pictured) Sert Council events to connect alumni, donors, and faculty for thought-provoking industry conversations. These events, often hosted by alumni, included discussions about the future of mobility in Los Angeles, landscape infrastructure in New York, design innovations in London, and the Bauhaus exhibition in Cambridge.

Hosted by **MARK RIOS MARCH '82, MLA '82** at his Los Angeles firm, Rios Clementi Hale Studios, Sert Council members and local alumni gathered for a conversation about the future of mobility in Los Angeles. GSD Associate Professor of Urban Planning, Andres Sevtsuk, his students from the urban design studio "Future of Streets in Los Angeles," and senior planning and transportation officials engaged the audience in an exciting discussion about the experience of urban travel and its impact on the community.



LONDON

In the Sert Council's first international event, guests explored the Living Unit London installation; learned about the recent GSD option studio "Making London" with Professor in Practice of Architectural Technology Hanif Kara, the co-founder of London-based engineering firm AKTII; and heard from Sir John Sorrell about the London Design Festival, which celebrates and promotes London as a design hub.

LOS ANGELES / FUTURE OF STREETS



Sert Council members and local alumni in San Francisco gathered at Autodesk to learn about the School's newest design program—Master in Design Engineering (MDE)—from the MDE Program Co-Directors, **PROFESSOR MARTIN BECHTOLD DDES '01**, Kumagai Professor of Architectural Technology at the GSD, and Professor Fawwaz Habbal, Executive Dean for Education and Research at the John A. Paulson School of Engineering. The panel also included two recent graduates of the MDE program and our host, Randy Swearer, Vice President of Educational Experiences at Autodesk and member of the MDE program External Advisory Board.



SAN FRANCISCO

NEW YORK CITY



GARY HILDERBRAND MLA '85, Peter Louis Hornbeck Professor in Practice of Landscape Architecture at the GSD and Principal of Reed Hilderbrand, engaged a group of Sert Council members in New York in discussions about expanding high-performance landscape infrastructure, by reprioritizing the space for streets and sidewalks. Special thanks to **KEN SMITH MLA '86** for hosting this event at his Manhattan studio.



“Design education has vastly changed since my studies at Harvard College in the Visual and Environmental Studies Department and subsequently, at the GSD. While I do not pretend to wholly understand the magnitude of this progress, it inspires me and my support is offered in gratitude.”

—DIANNA WONG AB '78, MARCH '83



Anne Irving Oxley with Miriam Alexandroff MArch '19 and Kelly-Anna Louloudis MArch '19, the 2018–2019 John E. (Jack) Irving Fellows, and Luisa Piñeros MArch '19 at the Fellowship Dinner.

GSD Alumni and Friends

Anonymous (4)

Christine Abbott MLA '13

Margaret D. Ackerman MCP '75

Thomas L. Ackiss MAUD '66

Francis D. Adams AB '67, MArch '72 and
Patricia Ingersoll Adams

Ambika P. Adhikari DDes '90

Albab Akanda MCRP '82

Daniel Alcombright

Lucy Emory Ambach AB '61, GSD '65

Gary T. Anderson MAUD '85

Nicolas S. Anderson MArch '05 and
Katherine Darnstadt

William R. Anderson MCRP '83

Maria Josefa Arquero de Alarcon
MLAUD '08

Jason Artemiuk AMDP '06

Adele Nucho Ashkar MLA '79

John J. Aslanian

Danielle Rose Aspitiz MArch '19

Isaac-Daniel Astrachan MArch '95 and
Meghan Farley Astrachan

Susan Marie Atkinson Glenn MArch '97

David E. Austin AB '56, MArch '60

Michael M. Azarian MArch '72

Dale G. Bagby PhD '70

Harold W. Bahls MArch '72

Howard A. Bailey AB '74, MCRP '78

Lisa E. Bailey MLA '86

Kermit F. Baker MCP '75

Robert C. Barber AB '72, MCRP '77

Kathleen C. Barrie LF '94

Robert S. Barringer MDes '89

Rodger G. Bartlett MLAUD '75

Stephen M. Bartlett MArch '87

Stephen Bartlett AB '63, MCP '69

Cynthia Baruzzi

James P. Batchelor LF '85 and

Clara C. Batchelor MLA '76

Glenn E. Bauer MArch '71

William Bechhoefer AB '63, MArch '67

Martin Bechthold DDes '01

Thomas G. Beddall MArch '80

Bill B. Bedford MCPUD '70

Nathaniel Quincy Belcher MArch '92

Brian A. Bell MArch '97

Charles Belson MArch '75

Bernard L. Benn MAUD '68

Patricia M. Bentz

Shary P. Berg MLA '77 and

Jeffrey T. Berg MArch '78

Jane Bernstein MLA '74

Todd A. Berry MCP '76

John E. Berson MArch '87

Claus W. Best MArch '86 and

Lisa J. Gimmy MLA '86

Gordon L. Binder LF '79-'80

Robin L. Blauer MCP '76

Ezra L. A. M. Block AB '95, MArch '06

Robert G. Bluhm AB '72, MArch '77

Steven Bolliger MLA '84

Donald A. Booth MArch '79

Walter A. Bossert

Helen Bowdoin

Louisa Bradford MArch '83

Roberto G. Brambilla MAUD '70

Marilyn R. Brandt MLA '83

Hooper L. Brooks AB '67, MLA '72

Jeffrey Brown MArch '65

Joel A. Brown MArch '74

Lance J. Brown BArch '65, MAUD '66

Lloyd L. Brown MUP '05

Charles B. Browne AB '71, MArch '76

John G. Buchanan, III GSD '78, JD '78

George N. Budd MArch '71

Susan C. Budd MArch '92

Daniel V. Calano, Jr. MCP '73, MLA '74 and

Kate F. Thompson MCP '74, MLA '75

Andres Felipe Camacho Pena MArch '19

Christina A. Cambruzzi MUP '06 and

Max Jaeger

John M. Campbell, Jr. MArch '60

Julie Campoli GSD '87, LF '10

Gregory G. Canaras MArch '05

Christine C. Cantwell MDes '91

Richard A. Carl MAUD '76

David A. Carlson AB '72, MArch '85

Page S. Carter MArch '87 and

Jack Carter

Shani Adia Carter MUP '16

Jose J. Cassorla MArch '71

Daniel Castor MArch '95

John H. Catlin MArch '74

D. Blake Chambliss MArch '60

Christopher T. Chan MArch '86 and

Anne E. Mock MArch '86

Lo-Yi Cheung-Yuen Chan MArch '59

Edmund W. Chang MArch '85 and

Susan K. Sylligardos MArch '86

Lian C. Chang MArch '13

Nina Kenny Chase MLA '12

Heston Wing-Chiu Chau MArch '75

David A. Chen MArch '99, MAUD '99

Joan Chen MLA '19

Philip B. Chen MArch '96

Lawrence Cheng LF '90

Renee M. Cheng AB '85, MArch '89

Alan S. Chimaoff MArch '69 and

Joan S. Girgus

Hsin-Pei Chou MArch '79

Andrea C. Cochran MLA '79

Andrew C. Cohen MArch '75 and

Joyce R. Kulhawik

Lizabeth A. Cohen RF '02 and

Herrick Chapman

Barbara J. Cohn Berman LF '80

Doris Cole AB cum laude '59, MArch '63

and Harold Goyette MArch '54

Donald L. Collins MLA '69

Cathleen M. Combs

David A. Conant MArch '92 and

Katherine Ware CSS '91, EDM '93

Donald J. Conway LF '73

H. Calvin Cook GSD '73

Peter V. Cooper SM '71, MRP '75

Robert J. Corser MDes '03

Kem S. Courtenay MLA '80 and

Roger G. Courtenay MLA '80

Dennis M. Couture MLA '82

Diana and John Cowles

Peter M. Coxe MArch '67

Susie Chung Criscimagna MUP '13

J. V. Jovi Cruces MArch '94, MPP '94

Richard J. Cureton MArch '76

J. Michael Curran LF '82 and

Leslee C. Curran

Dora Currea MCRP '80

Chava Danielson MArch '93 and

Eric C. Haas MArch '93

Eric H. Davy MArch '79

Yanel Enid De Angel Salas MDes '06

David T. De Celis MArch '98

Andrew J. Dean MArch '68

Cathy Deino Blake, FASLA, MLA '77

Louis S. DeLuca MCP '64

Joseph P. DeManche MArch '82

Daniela Diaz-Padua MAUD '09

Albert Greene Dobbins III LF '90

John J. Donahue III MCRP '79

Jaime Donate Pons MAUD '06

Peng Dong MDes '16 and Jialei Huang

Brett Donham AB '60, BArch '64 and

Priscilla B. Donham

Mark L. Donohue, AIA MArch '95

Kathleen A. Dorgan LF '02

Robert Douglass OPM '85, MDes '92,

DDes '94

Claire A. Doussard MLAUD '14

Thomas A. Doxiadis AB '92, MLA '98,

MArch '98

Wenche E. Dramstad GSD '95

Lydia B. Duff

Lane M. Duncan MDes '87 and

Jeanne A. Duncan

Syrette Dym MCP '72

Phillip R. Eagleburger MArch '81

Penny Laskin Eickemeyer MCRP '80

Richard W. Eifler MArch '84

Amy T. Eliot MArch '84

Carla J. Ellern MLA '93

Salah S. El-Shakhs MCP '61, PhD '65

Nicholas S. Everett AB '73, MLA '77

Mary E. Eysenbach LF '05

Zachary U. Farkes AB '06 and

Allison S. Farkes AB '06

Linda P. Faust

Jennifer M. Fauth MUP '11 and

Michael T. Wilson AB '07, MLA '11,

MUP '11

Sondra D. Fein MArch '08

Sarah C. Felton MArch '91

John L. Fields and Marsha M. Fields

Edward H. Fife MLA '67

Amy Finch MArch '91

Stephen A. Fiskum MArch '79 and

Michele Fiskum

Charles H. Fleisher MAUD '68

Rogelio A. Flores MUP '01

Thomas J. Flynn MCP '76

Martha A. Folger MLA '95

Kathleen Fox LF '02 and J. Amery Fitch

Adel T. Foz AB '63, MArch '68

Clara Fraden MUP '17

Velma S. Frank

Rachel Frankel MArch '91

Richard J. Franz MArch '81

Lap Chi Kwong MArch '13 and Alison Von Glinow MArch '13 at the 2018 Reunion attended by classes ending in 3 and 8.





Students enjoy the opening reception for the exhibition, *Urban Intermedia: City, Archive, Narrative*.

Charles J. Frederick MLA '72
 Nicole Freeman
 Deborah Frieden LF '07
 Amy Elizabeth Friedlander MUP '19
 Todd Fulshaw MArchII '93 and
 Susan Fulshaw
 Daniel C. Funk MArch '67
 Richard F. Galehouse MCP '61
 Bill Gallagher MAUD '86
 Juliana E. Gamble MArch '07, MUP '07
 Carol D. Gander MArch '81
 Jeffrey S. Ganem MArch '85
 Antonio Garcia Orozco MDes '04
 Keith Garner MUP '97
 Glenn Garrison LF '84
 Alan Golin Gass AB '53, MArch '56
 Harry C. Gaveras MAUD '97
 Michael Mark Gilligan MLA '76
 Nathaniel Ginsburg MDes '99
 William R. Glass MAUD '71
 Jane Torrey Duff Gleason MArch '87
 Kathryn L. Gleason MLA '83

Andrew A. Glickson AB '70, GSD '73
 Charles P. Goebel MArch '82
 Leah G. Goessling MLA '85
 Rolf Goetze AB '59, MArch '62 and
 Julie Anne Goetze AB '59, MAT '60
 Tom Goffigon MArch '84
 Rachel L. Goldsmith MUP '96
 Michael B. Goldstein LF '72
 Donna J. Hull Goltry MRP '74
 Donald B. Goodhue AB '53, MArch '56
 Michael L. Goorevich MArch '03
 Theodora Graff
 Margaret S. Graham MDes '03
 Sola Grantham MArch '09 and
 Stephen Gildea
 Ellery Culver Green MArch '71
 Donald I. Grinberg AB '68, MArch '73
 Nathan W. Gross MCP '71
 William J. Grundmann MLA '73
 Lu-Min Guo MArch '00
 Adriana I. Gutierrez Alvarez MDes '15
 Gary C. Gwon MArch '74

John A. Gwynne MLA '74
 Harvey J. Hacker AB '63, BArch '69,
 MArch '69
 Consuelo R. Hackett
 Thomas B. Hagerman MLA '84
 Guy L. Hagstette MAUD '81
 Besim S. Hakim MAUD '71
 Taylor J. Halamka MArch '19
 Mary Ann Hales
 Benjamin D. Halpern MArch '17
 Nancy Hammond
 W. Easley Hamner MArch '67 and
 Suzanne L. Hamner
 John T. Hankey MDes '90
 Nancy Lyons Hannick MLA '79 and
 Steven M. Hannick PhD '83
 Mark G. Hanson GSD '77, MCRP '81
 C. Kyle Hanton MArch '81 and
 Ana M. Hanton
 Christine C. Hanway MArch '87 and
 William S. Hanway MArch '87
 Henry C. Hardnett MArch '73

“The financial support I received from the GSD made getting my MLA a reality that would not otherwise have been possible. The world-class faculty and staff at Harvard gave me the tools to forge a successful career in design that has taken me across the country and around the world. Helping to give the next set of future design leaders access to those tools is the least I can do.” —PATRICK MAGUIRE MLA '94

Beverly C. Harman MCP '74
 Kevin L. Harris, FAIA, MAUD '80
 Timothy A. Harrison MArch '94
 Richard C. Hartman MCP '74
 Keith Hartt
 Michael S. Hass AB '65, MArch '68
 Hiroaki Hata MAUD '78
 Edward M. Hatch MArch '73 and
 Helen D. Hatch, FAIA, MArch '73
 Isaac Heard, Jr. MCP '73
 Joel D. Heisey MAUD '91, MPA '91
 Richard L. Henry MArch '67
 Ann Hershfang AB '56, LF '89
 Ricardo Hinkle MLA '90
 Herman K. Hochschwender MLAUD '76
 Timothy F. Holland MArch '85
 Carol G. Hoover
 David F. Hoover LF '72 and
 Carol R. Swenson
 Carol H. Horowitz MCP '75
 Mark G. Horton MArch '83
 Joseph Charles Victor Hruda MArch '66
 Lawrence Hsu
 Ying Huang MDes '13
 James P. Hudson MLA '61
 Thomas R. Huff MAUD '80
 Duncan I. Hughes MCP '69
 Elizabeth Humstone MCP '73
 Kurt C. Hunker MArch '82
 Matthew Hurff MArch '98 and
 Karen B. Hurff

Thomas D. Hussey MAUD '06
 Thomas R. Huth MArch '78
 Teddy Huyck MArch '09 and
 Clea L. Lopez MD '09
 Ioannis Ignatakis MDes '07
 Stani Iordanova MArch '09
 Max Isley MArch '59
 Ed Jakmauh MAUD '66
 John A. James MArch '71
 Asad Nasim Jan MUP '19
 Albert S. Jenkins MArch '80
 Evan A. Jenkins MArch '07 and
 Margaret M. Fain MArch '10
 Shaun J. Jennings MArch '95
 Thomas H. Jin MArch '88
 Danilo Joa MArch '80 and Cynthia Joa
 Sonja J. Johansson AB '63, MLA '69
 Trevor A. Johnson MUP '14
 Douglas C. Johnston MArch '87
 Michael Joroff MCP '62
 M. Alison Joseph-Dickinson MLA '85
 Gerald S. Jue MArch '82
 Charles A. Kalauskas MCP '74
 David P. Kanegis MBA '74, MCP '74
 Chun-Min Tony Kao MArch '72
 Beth K. Kass
 Harry F. Kaufman MArch '71
 Jonathan D. Keep MLA '01
 Rosemary Crane Kehr MCRP '78
 Kevin J. Keller MUP '99
 Priscilla Densmore Kern MArch '71

Haig Khachatoorian LF '86
 Hankyu Kim MArch '14
 Daniel H. Kinkead MAUD '02
 Christopher Gerardo Knight MArch '69
 Russell P. Koff MUP '16
 You-Ching E. Koh MAUD '81
 Bassam M. Komati MArch '06
 Mary M. Konsoulis MCRP '81
 Beth Kramer
 Rick Krochalis MCRP '78
 Carolinn A. Kuebler MArch '82
 Thomas D. Kurlmel DDes '91
 William P. Lamb AB '60, MArch '64
 Jo D. Landefeld MArch '81
 Robert Lane LF '09
 Lily Sun Lang MLA '70
 Elisabeth B. Lardner MLAUD '86
 Marlin Lasater
 Mary Ann Lasch, FASLA, MLA '84
 Samuel M. Lasky MArch '97 and
 Christina M. O'Sullivan, AIA, MArch '97
 Ethan Lassiter MUP '15
 Amy Sheehan Latva-Kokko MArch '04
 and Mika Latva-Kokko
 Michael C. Lauber MArch '78
 Charles Laven LF '81
 Rayford W. Law MArch '83
 Darrow A. Lebovici GSA '71
 Arnold Lee MArch '88 and
 Grace Liao MAUD '04
 Young-Wha Lee MArch '99

Yung-Kang K. Lee MArch '88
 Thomas J. Leib MArch '76
 Andrew C. Lemer LF '93
 William R. Lennertz MAUD '85 and
 Susan Lennertz
 David G. Lever MArch '83
 Rachelle L. Levitt MCP '75 and
 Bernard Weberman
 Anne McCutcheon Lewis AB '65,
 MArch '70
 Lisa S. Lewis MLA '92
 Xu Li MArch '11
 Sue Yung Li-Ikeda MLA '58 and
 Dale Kango Ikeda MLA '63
 Jack H. Lin MArch '08
 Shih-Chao Lin
 Tina Lindinger MArch '86
 Paul W. Linehan MLA '79
 Blaine E. Liner LF '76
 Adriana Lira MDes '03, DDes '06
 David Livermore LF '95 and
 Rebecca Livermore
 Robert S. Livesey MArch '72
 Robert A. Lloyd AB '56, MArch '59
 Susan R. Lowance MArch '95
 Karen A. Lu MArch '98
 Xiangdong Lu MDes '01
 Laura Lubin

Javier Lucio MArch '90
 Carl Luckenbach MArch '59 and
 Carol Luckenbach
 Eric K. Lum MDes '89 and Linda M.
 Greub MBA '87, EXED '02, EXED '04
 Scott A. Lutz MDes '01
 J. Gregory Lynch JD '73
 Glenn R. MacCullough MArch '83
 Robert P. Madison, FAIA, MArch '52
 Yasutaka Maeda MDes '00 and
 Yukiko Maeda
 Fernando Hernandez Magallanes MLA '81
 Miller D. Malcolm AB '54, MArch '59 and
 Beverly Faye Pickett Malcolm
 Steven J. Marchetti AB '80, MArch '84
 Esther M. Margulies MLA '89
 Carlos Marin-Pacheco MCPUD '75
 Michael D. Markovitz MArch '84
 Melissa R. Marshall MLA '75
 Yumiko Matsubara MArch '18
 Lorain R. Matthews MArch '86 and
 Christopher R. Matthews THM '86,
 THD '93
 Robert M. Mattson MLA '66
 Richard W. Mayer MLA '70
 Stephanie M. McAllister MLA '84 and
 Roger Jungerman
 John J. McDonald MArch '88

Cameron C. McNall MArch '85
 Franklin B. Mead MAUD '66, MArch '66
 Joanne P. Meder MCRP '77
 Carl R. Meinhardt, FAIA, MArch '64
 Diane C. Melish MCP '76
 Allyson C. Mendenhall AB '90, MLA '99
 George R. Metzger MArch '71
 John F. Metzler MAUD '75
 John C. C. Meunier MArch '60 and
 Dorothy E. Meunier
 Constantine E. Michaelides MArch '57
 and Maria C. Michaelides AM '54,
 PhD '58
 Thomas J. Mierzwa MArch '68
 John F. Miller MArch '62
 Andrew P. Mitchell MLA '84
 Murray S. Monroe, Jr. MArch '94
 Hyung S. Moon MArch '04
 Steven Moon MArch '95
 Roger D. Moore MArch '74
 Yu Morishita MDes '08
 Jane Gleason Morse AB '64 and
 Robert F. Morse
 Patrick S. Mulberry MAUD '75
 Shuichi Murakami MLA '95
 Mary J. Myers MCP '73
 Paul W. Nakazawa MArch '79
 Doris B. Nathan MArch '60
 Alpa Nawre MArch '11
 Ian A. Nestler MArch '75
 Jill S. Neubauer MArch '88
 Paul A. Neundorfer MLA '90
 Thuyen Q. Nguyenphuc MAUD '76
 Rebecca M. Nolan MDes '17
 Nicholas W. Noon MBA '70, MCP '71
 Charles R. Norris III MArch '68, MAUD '69
 Eamon Sean O'Connor MUP '19, MPA '19
 Melinda Kelson O'Connor MArch '00
 Patrick J. O'Connor MArch '83
 Kyle Dela Ofori MUP '19, MPP '19
 Marc J. Ojanen MArch '94
 Jeremiah D. O'Leary, Jr. AB '52, MCP '57
 John T. Olson AB '64, MArch '67,
 MAUD '68 and Jane Olson
 Fred D. Ordway III MArch '71

Visiting critic, Manabu Chiba, performs a desk crit with Elizabeth Savrann MLA '18 for the fall 2017 option studio "Excavating Space and Nature in Tokyo."



Charles H. Osborne MArch '84 and
 Antonia M. Bellalta Osborne MLA '86
 Howard F. Ostrout, Jr. MLA '76 and
 Lorraine L. Ostrout
 Gregory G. Y. Pai MArch '74
 Thomas M. Paine AB '70, MLA '74
 Jonathan K. Pang MAUD '89
 Wing N. Pang MCPUD '71
 Evelyn H. Pappas MArch '03
 Kejoo Park MLA '84
 David M. Parsons AB '71, MArch '75
 Heather T. Patterson MArch '03
 Edwin H. Paul MArch '56
 Jennifer J. Payette MArch '90 and
 Jeffrey D. Peterson
 Allison C. Peitz
 Paige E. Peltzer MUP '16
 Mariana Pereira Guimaraes MUP '19,
 MPH '19
 Lucy Warner Perry MLA '89 and
 Charles C. Perry MArch '91
 Isaac C. Persley MArch '04
 Sarah Peskin LF '94
 Mary Anne Piacentini MCP '74
 Anna E. Pieczara-Blanchfield MArch '77
 George J. Pillorge MAUD '61, MCP '63
 and Debbie B. Pillorge
 David M. Pollak MArch '84 and
 Emelia J. Benjamin AB '78, SM '90
 Peter Pollock LF '98
 Daniel O. Potter AB '68, MArch '74
 Charlotte Present MLA '84
 Andrew Pressman, FAIA, MDes '94 and
 Catharine Kauffman
 Devon J. Prioleau MDes '06
 Earl L. Purdue MArch '87
 Brad Quigley
 Philip Ra MArch '98 and
 Vivian H. Lin-Ra MLAUD '99
 Estello-Cisdre Fronda Raganit MLA '19
 Steven U. Ramsdell and
 Gretchen A. Ramsdell
 Anath Ranon MArch '90
 Lucy Heiman Rapperport AB '52,
 MArch '55



Danica Liongson MDes '20, MLA '20 during the Envisioning Future Resilience Scenarios for the Boston Harbor Islands Conference.

Henry S. Reeder, FAIA, MArch '64
 William B. Renner MLA '80
 Thomas F. Robinson MArch '00
 Lincoln E. Rodon MAUD '93 and
 Isabel R. Rodon
 David S. Rolland MArch '87
 Jonathan P. Rollins MArch '87
 Lara C. Rose MLA '03 and
 James M. Carothers PhD '05
 Marcia Rosen LF '00
 Joseph Rosenblum MCP '76
 Jay K. Rosengard MPA '81, DDes '92
 Harvey M. Rubenstein MLA '65
 Aviva Rubin MDes '12
 Richard L. Rundell MArch '86
 David J. Rutherford MArch '72
 F. Daniel Rutledge MArch '81
 Doris N. Salzman
 Jocey Sanders
 Hugh H. Saxon, Jr. MLA '77
 Giuseppe A. Scalia MAUD '92
 Thomas J. Scharffenberger MLA '83
 Craig Schelter MArch '68

Angela V. Schifanella MArch '86 and
 Wm. Alan Wilson MArch '86
 Arlene D. Schiff MLA '84 and
 Gary M. Schiff MLA '84
 Deidre L. Schmidt LF '08
 Gretchen Schneider Rabinkin MArch '97
 Stephen C. Schoenbaum MD '66,
 MPH '74, PMD '85 and
 Sylvia B. Schoenbaum
 Larry Schorno
 John A. Schuyler MAUD '86
 Paul A. Scripko MCRP '80
 Mary Patricia Sekler PhD '73,
 Radcliffe Institute '75-'76
 Jeffrey D. Semel and Linda F. Semel
 Yongjie Sha MDes '03
 Eric D. Shaw MUP '00
 Richard W. Shaw MLA '76
 Xiwei Shen MLA '19
 Poyao Shih MArch '19
 James Skypeck
 Eugene Slater LF '83
 Ronda E. Small GSD '77

Cynthia W. Smith MLAUD '84 and
Steve Imrich
Daniel A. Smith MArch '83
Gabriel A. Smith, FAIA, MArch II '92
H. W. Smith, Jr.
J. Ritchie Smith, Jr. MLA '80
James H. Smith MArch '82
Mary A. Smith MLA '82
Derick Snare MArch '80
Cynthia R. Snorf MLA '86
Linda L. Snyder LF '97
Sang Hyuck Sohn MDes '00
Diane L. Sokal MArch '86 and
D. Randolph Meiklejohn MArch '87
Joi Song
Richard St. John LF '02
Jeffrey L. Staats MAUD '75
Nancy J. Stack MCP '76
John B. Stanbury MRP '76
Robert J. Stein MArch '72, LF '94 and
Joan L. Stein EDD '73
Joyce H. Steinglass MArch '64 and
Ralph Steinglass MArch '64
Joseph D. Steller MCPUD '76
Charles G. Stephenson
Robert B. Stephenson MCP '65
Jeffrey R. Stern MCRP '79 and
Joyce E. Moskovitz MCRP '79
Rachel Stevens, AIA, MArch '07
Katherine G. Stifel MArch '91
Brett C. Stilwell MArch '02
James M. Stone MLA '99, MUP '99
Whitney Stone
Charles R. Studen MLA '68
Lisa Su MArch '08
Abby P. Suckle MArch '77
Eulho Suh MArch '99 and
KyungEn Kim MArch '02
Charles M. Sullivan MCP '70
Stephen M. Sullivan MArch '81
Karen A. Sunnarborg MCP '76
Firas Suqi MUP '19
Joseph G. Svatos MCRP '79
Douglas Svitchan MArch '72

Robert C. Sze MArch '05
Yvonne Szeto MArch '79
Toshihiko Taketomo MArch '75
Jonathan B. Tate MDes '08
Geoffrey S. Taylor MDes '98, DDes '04
Sharon J. Tepper MUP '98
Richard H. Thibedeau MRP '74
Antonios Thodis MDes '18
Lissa Thompson MLA '86
Elizabeth R. Thompson MArch '07
Thomas Winfield Thornton MArch '76
Erica Lindenbaum Tishman MArch '85
Zenovia Toloudi DDes '11 and
Dimitris Papanikolaou DDes '16
Joel A. Tomei MCPUD '73 and
Patricia H. Tomei
David A. Treasure MCP '72
Harriet Tregoning LF '04
Bogue Trondowski MArch '97
Carol A. Truppi MLA '83
Konstantinos Tsamis
Toshio Tsushima MAUD '95
Michel A. van Ackere MArch '94
Peter D. Vanderwarker LF '97 and
Richie Vanderwarker
Anne Vaterlaus MLA '08
Melissa P. Vaughan MArch '93
Tran H. Vinh MArch '98
Gail Vittori LF '99
John David Wagner MArch '19
Jacqueline M. Walrond and
Robert Walrond
Stephen J. Wanat BArch '64
Ray K. Warburton AB '63, MArch '66
C. Edward Ward, Jr. MBA '70
Courtney Ward
Chloe Redmond Warner MArch '05
Katy Moss Warner LF '01
James R. Wasser MArch '84
Barry L. Wasserman AB '57, MArch '60
A. Elizabeth Watson LF '94
James R. Watson MCP '67
Kathleen L. Webb MCRP '78
Craig J. Weber MLA '70

Philip L. Webster MArch '72
Debra A. Weiner MCRP '78 and
Hillel Weinberg
Amy K. Weinstock MArch '85 and
Michael C. Coln
Heather G. Wells MArch '91
Molly S. Wells and Walter B. Wells
Henry M. White MLA '82
Steven Whitney MArch '95
Robert K. Wiberg MCRP '80 and
Laura G. Wiberg MLA '80
Jay Wickersham MArch '83, JD '94
Ann Houston Wiedie
Joseph O. Wong MLA '75
Matthew Gomez Wong MLA '18
William R. Woodhead MCPUD '71
David P. Wright AB '66, MArch '70 and
Mary Lou Willits
James M. Wright MArch '75
Arthur Wrubel MCP '59
Ke Xu MAUD '13
Ryan J. Yaden MAUD '03
Susan A. Yamaguchi MArch '83
Inger S. Yancey MArch '91 and
Richard C. Yancey MArch '92
Jessy Yang MAUD '17
Susan Yee MDes '92 and Haldane Liew
Hsiao-Wei Yeh MArch '05
Adelle A. York MDes '19
Bonnie Gee Yosick, for
David Yosick MArch '93
Bryant Young MArch '77 and
Rebecca Young
Christopher A. Yulo MLA '01
Sally Notthoff Zarnowitz MArch '86
Paul V. Zemtsov MArch '82
Jibing Zhang MDes '18
Long Chuan Zhang MArch '18
Renyi Zhang MAUD '19
Xiaoyuan Zhang MLA '19
Peter H. Zimmerman MArch '82 and
Eliza Zimmerman
Dr. Alexander Zipprich MDes '06

Firms, Companies, and Foundations



A view of the exhibition, *Multiple Miamis*, curated by Ting Liang MLA '19, MAUD '19, and Zishen Wen MLA '19 in the Frances Loeb Library.

\$1M+

Anonymous
LUMA Foundation
AECOM Asia Company Limited

\$999 – 100K

Clark Construction Group, LLC
John S. and James L. Knight Foundation
Lotte Engineering and Construction
Advanced International Multitech
Co., Ltd.
Boeing Company
Bureau International des Expositions
Perkins&Will, Architects
C Foundation

\$99 – 25K

Tianhua Architecture Planning &
Engineering Co., Ltd.
Nipsea Management Co. Pte. Ltd.
Power Engineers, Inc.
Nissan North America Inc.
Southwest Florida Community
Foundation, Inc.
BLAU B. Landscape Arquitectura y
Urbanismo, S.L.
Heinz Endowments
Arup Services New York Limited
Bentley Systems, Incorporated
HNTB Corp.
Kiewit Finance Group Inc.
Stantec Consulting Ltd.
TRC Environmental Corporation

\$24 – 10K

Otak, Inc.
Agave Capital, S.A.P.I. De C.V.
Graham Foundation for Advanced
Studies in the Fine Arts
Massachusetts Port Authority
(Massport)

Up to \$9K

Fondazione Renzo Piano
Bank of America Corporation
Louis Berger Group, Inc.
Stantec
Payette Associates Inc.
Gartner
Urban-X
Google
Autodesk, Inc.



Ting Liang MAUD '19, MLA '19 and Zishen Wen MLA '19 present during the final review for the fall 2018 option studio, *Multiple Miamis*, led by Chris Reed AB '91 and Sean Canty MArch '14.

“Through its Future of the American City effort in Miami, supported by Knight, GSD has partnered a world-class group of problem-solvers with local leaders, innovators, and residents to tackle vexing challenges facing South Florida and beyond.”

—RAUL MOAS, KNIGHT FOUNDATION PROGRAM DIRECTOR FOR MIAMI

Gifts- in-Kind

The architectural drawings and correspondence of Araldo Cossutta
MArch '52†
Gift of the Estate of Araldo Cossutta
MARCH '52

The photographs of Aaron Kiley†
Gift of Oliver Kiley and Susan Topol

The papers and collections of Charles W. Harris GSD '52, EdM '63†
Gift of the Estate of Charles W. Harris
GSD '52, EdM '63

Gifts in Memory of

Dr. Lucretia H. Giese AM '80, PhD '85†
Patricia M. Bentz
Walter A. Bossert, Jr.
Helen Bowdoin
Diana and John Cowles
Velma S. Frank
Mary Ann Hales
Nancy Hammond
Keith Hartt
Carol G. Hoover
Darrow A. Lebovici GSA '71
Steven U. Ramsdell and
Gretchen A. Ramsdell
Doris N. Salzman
Larry Schorno
Molly S. Wells and Walter B. Wells
Ann Houston Wiedie

Donald L. Graff MCP '64†
Theodora Graff

Norman L. Hoberman LLB '51†
Mary Ann Hoberman

Helen and Leslie C. Holtz†
Thomas C. Holtz MARCH '77

James Pratt MARCH '53†
Joanne Henderson Pratt AM '50

David Yosick MARCH '93†
Bonnie Gee Yosick

Matching Companies

Gartner
Georgia Power Foundation, Inc.
Johnson & Johnson Family of Companies
Contribution Fund
LVMH Moët Hennessy Louis Vuitton SE
State Street Matching Gifts
UBS Foundation U.S.A.

Michael Van Valkenburgh delivers the annual Frederick Law Olmsted Lecture focusing on thirty years of park-making.



H. Langford Warren Society

The H. Langford Warren Society recognizes all alumni and friends of the GSD who have provided generous future support through life income plans, bequest provisions, or other deferred gift arrangements.

The Warren Society is named for H. Langford Warren, an exemplary leader and visionary who founded the School of Architecture at Harvard. He established a model of cross-disciplinary collaboration that endures as a hallmark of the GSD, joining the fields of science and fine arts to the study of architecture, and helped develop the nascent field of landscape architecture.

Anonymous (3)

Diana A. Abrashkin AM '69, MArch '80

Yasuhiro Akie MDes '93

Claire R. Bennett AB '49, GSD '49

Christopher C. Benninger MArch '67

Richard D. Berridge MLA '64

John H. Beyer MArch '61

Jeannette O. Blanco MLA '70

Richard G. Bock

David B. Boyer AB '53, BArch '56 and

Mary-Louise Boyer MArch '56

Armand P. Brunet MLA '58

Frederick Man Hin Chan MAUD '74

Adele Chatfield-Taylor LF '79

David T. Chou MDes '91

Doris A. Cole AB '59, MArch '63 and

Harold Goyette MArch '54

Max Z. Conrad MLA '63

Estate of Araldo Cossutta MArch '52

Diego P. Diaz MDes '92

Stephen M. Dietz MArch '94

Katherine Dillon MAUD '86 and

Jeffrey A. Murphy MArch '86

Michael V. Dyett AB '68, MRP '72 and

Heidi Richardson

Katherine G. Farley MArch '76

Roger P. Ferris LF '92, MDes '93

Michael Friedman MDes '92

Warren B. Fuermann MDes '00

Theodore R. Gamble, Jr. MArch '77,

MBA '79 and Susan L. Stupin

Lucretia H. Giese AM '80, PhD '85†

John K. Hannula MLA '77

Estate of Charles W. Harris GSD '52,

EdM '63

Joel D. Heisey MAUD '91, MPA '91

Thomas C. Holtz MArch '77

Henry B. Hoover, Jr.

Robert P. Hubbard Revocable Trust

of 1980

Karen A. Janosky MLA '91 and

David A. Schappell

David N. Jensen MArch '87

Benjamin C. Johnson MLA '72

Yutaka Kamiya

James G. Kostaras MAUD '83

Geoffrey R. Le Plastrier MArch '75

Jack Lesko

D. Anne Lewis MLA '81

Mingche M. Li MCP '73, PhD '77

Constance J. Lieder MCP '60

David J. Luebke MArch '73

Sheldon L. Lynn MCP '63

Charles M. Mirotznik, Esq.

Ping Mo GSD '90 and YiLing Mao AB '91,

AM '94

Roger D. Moore MLAUD '74

Gustavo V. Munizaga MAUD '64

Gordon E. Olson MBA '75

Kay O'Neil MCRP '78 and

David Nelson MCRP '78

R. Duane Perry MCRP '80 and

Arthur M. Kaplan JD '70

Wannaporn Phornprapha MLA '95

Cliff Reston AMDP '02

Folco Riccio-Frojo MAUD '84

Annegret K. Schaible Rieger MArch '99

Peter G. Rolland MLA '55 and

Wendy A. Rolland BArch '56†

Mark Louis Schmid MArch '74

Inaki Bergera Serrano MDes '02

Vance R. Smith MArch '74

Harold C. Spear MD '47† and

Suzanne Spear†

Estate of William F. Stern AB '69,

MArch '73

Mark W. Strong MArch '95

Peter B. Strong COL '85

Hiroki Sugiyama MAUD '92

Sumeth Sukapanpotharam MAUD '99

Shan-Mei Sun MArch '97

Susan J. van der Meulen MArch '78

Bartholomew Voorsanger MArch '64

Kenneth H. Walker MArch '66 and

Mary S. Walker

Robert H. Welz MArch '55

Robert L. Williams MArch '55

David E. Woolf MArch '77

Norio Yamamoto MAUD '95

Design Discovery
students in the trays
of Gund Hall.

Ambassadors

Alumni Council

The Alumni Council is the primary representative body of Graduate School of Design alumni, with the fundamental goal of promoting the engagement of the alumni community and the advancement of the GSD in the world.

EXECUTIVE COMMITTEE

Chair

Allyson C. Mendenhall AB '90, MLA '99

Vice Chair

Cathy Deino Blake, FASLA, MLA '77

Immediate Past Chair

Michael B. Lehrer, FAIA, MArch '78

Committee Leadership

Peter R. Coombe MArch '88

Trevor A. Johnson MUP '14

Brenda A. Levin, FAIA, MArch '76

Martin K. Poirier MLA '86

Nick Winton MArch '90

Corey A. Zehngebot MArch '09

COUNCIL MEMBERS

Paola Aguirre Serrano MAUD '11

Kaley Blackstock AB '10, MArch '15

Christopher A. Bourassa AMDP '09

Justin Marc Chapman MDes '12

Nina Kenny Chase MLA '12

Renee M. Cheng AB '85, MArch '89

Sekou G. Cooke MArch '14

Collette A. Creppell AB '82, MArch '90

Peter Y. Davos MDes '09

John di Domenico MAUD '79

Harry C. Gaveras MAUD '97

Rickie Joanna Golden MDes '12

Margaret S. Graham MDes '03

Ralph E. Graham (Reggie) MArch '78

William R. Hammer MAUD '68

Kevin L. Harris, FAIA, MAUD '80

David M. Hashim MArch '86

Jaya Kader MArch '88

Frank C. Lee, FAIA, MAUD '79

Zechariah David Lockrem MUP '10

Anne-Marie Lubenau, FAIA, LF '12

Thomas E. Luebke, FAIA, MArch '91

John A. Mann MUP '01

Shunsaku Miyagi MLA '86

Jeffrey A. Murphy MArch '86

Michael P. Murphy MArch '11

Richard T. Murphy, Jr. MLA '80†

Alpa Nawre MLaUD '11

C. Ron Ostberg MArch '68

Ana Pinto Da Silva MDes '05

Ryley A. Poblete MArch '14

Gil Prado AMDP '14

Frank Ruchala MArch '05, MUP '05

Paris M. Rutherford MAUD '93

Eric D. Shaw MUP '00

Bryan R. Shiles MArch '87

Robert J. Stein MArch '72, LF '94

Yvonne Szeto MArch '79

Zenovia Toloudi DDes '11

Sameh N. Wahba MUP '97, PhD '02,
KSGEE '13

Kristina H. Yu MArch '95

Sara Zewde MLA '15



2018–2019 Alumni Council members gather for a group photo on the steps of Gund Hall.

Dean's Leadership Council



The Dean's Leadership Council is charged with providing guidance to the Dean and the School on the continued evolution and excellence of the GSD. The Council plays an active role in advancing the visibility and importance of the GSD at the University, among the School's many design fields, and in the world at large. The Council meets periodically with the Dean to discuss the strategic priorities and needs of the School. Individually, Council members serve as ambassadors and advocates for the School, helping the GSD broaden and strengthen its external relationships.

COUNCIL MEMBERS

Sameer Bhargava AB '95, MBA '00
Sean Chiao MAUD '88
Bridget Colman
Ronald M. Druker LF '76
Amy C. Edmondson AB '81, AM '95, PhD '96
Timur F. Galen
Philip L. Harrison AB '86, MArch '93
John K. F. Irving AB '83, MBA '89
Carola Jain
J. W. Kaempfer, Jr. MBA '71
Melissa H. Kaish GSD '85
Glenn D. Lowry AM '79, PhD '82
Scott Mead AB '77
Stuart A. Miller AB '79
Sanjay H. Patel AB '83, SM '83
Samuel Plimpton MBA '77, MArch '80
John C. Portman III MArch '73
Craig Robins
Jackie Soffer
Rudy F. Weissenberg MDes '18
James Xia (Hai Jun Xia)

Mohsen Mostafavi addresses the audience at the Fellowship Dinner.

Loeb Fellowship Alumni Council

After completing the Fellowship year, a Loeb Fellow joins over 450 alums in a robust network of professional colleagues. Delegates from each class work with a set of officers to plan activities that extend the connections and mutual learning among Fellows, including memorial luncheons, an annual fall study tour, and an anniversary reunion and symposium every five years.

OFFICERS

President

Robert J. Stein MArch '72, LF '94

Vice President

Chee Pearlman LF '11

Secretary

Douglas Meffert LF '08

Treasurer

LaShawn Hoffman LF '15

CLASS REPRESENTATIVES

John Zeisel LF '71

Richard I. Krauss AB '57, LF '72

Jean Cormack King LF '73

Todd Lee AB '61, LF '74

Robert F. Daylor LF '77

Reese W. Fayde LF '79

Michael L. Horst LF '82

Alexia Lalli LF '83

James R. Vaseff LF '84

Edward R. Frenette LF '85

Haig Khachatoorian LF '86

Tessa Huxley LF '87

Laurie Beckelman LF '88

Cynthia C. Davidson LF '89

Lawrence Cheng LF '90

Martha Welborne, FAIA, LF '92

Andrew C. Lemer LF '93

Charles E. McKinney LF '94

Robert E. Snieckus LF '95

Patricia Zingsheim LF '96

Peter D. Vanderwarker LF '97

Julio Peterson LF '98

Marcia I. Cohen LF '99

Susan Chin LF '00

Anthony Flint LF '01

Kathleen Fox LF '02

Jennifer Siegal LF '03

Harriet Tregoning LF '04

Cara McCarty LF '05

Randy Gragg LF '06

Denise R. Arnold LF '07

Janet S. Echelman AB '87, LF '08

Robert Lane LF '09

Julie Campoli GSD '87, LF '10

Tim Stonor LF '11

Anne-Marie Lubenau, FAIA, LF '12

Ann M. Yoachim LF '13

Baye Adofo-Wilson LF '14

Thaddeus Pawlowski LF '15

Arif Khan LF '16

Karen Abrams LF '17

James Shen LF '18

Katherine W. Swenson LF '18



The 2019 Loeb Fellows (left to right): Michiel van Iersel, Bryna Lipper, Katie Swenson, Stephen Burks, Washington Fajardo, Jeana Dunlap, Michael Smith Masis, Andrea Reimer, and Maria Cabildo.



Jeronimo Beccar MDE '19, Saif Haobsh MDE '19, and Carla Saad MDE '19 at the SEAS Active Learning Labs.

MDE External Advisory Board

Harvard University's Graduate School of Design (GSD) and John A. Paulson School of Engineering and Applied Sciences (SEAS) launched a collaborative Master in Design Engineering (MDE) degree program, which began in Fall 2016. The MDE External Advisory Board brings together experts and professionals from diverse fields—design, engineering, education, urban planning, technology, and more—to provide knowledge and insight to the Master in Design Engineering program. The interdisciplinary expertise of members reflects the innovation, ingenuity, goals, and values of the program, and provides invaluable support to the collaborative nature of MDE.

EXTERNAL ADVISORY BOARD MEMBERS

Sean Chiao MAUD '88, AECOM
 Dana Cho MArch '01, Knowledge User Experience, Google
 Andrew Cogan AB '84, Knoll, Inc.
 Fiona Cousins, Arup
 Karen Harris MBA '99, Bain & Company
 Jonathan Hursh, Utopia
 Ana Pinto da Silva MDes '05, Amazon
 David Radcliffe, Google
 Wolfgang Rieder, Rieder Group
 Randy Swearer, Autodesk, Inc.
 Harry West, frog

“It is truly an honor to be able to give back to Harvard, as I feel I benefit every day from my time in the studio. The GSD has always been known for creativity and diversity of thought, but now, with the School’s greater international consciousness and breadth of programs, I am more excited than ever for new students coming in!”

—TIMOTHY GREER MARCH '82



Jiabao Li MDes '18 and critic Scott Smith MArch '17 with her project “TransVision: Exploring the State of the Visual Field in the Age of Extreme Augmentation” at the MDes Thesis Reviews.





A view of an exhibition that recognizes the High Line as the winner of the 13th Veronica Rudge Green Prize in Urban Design in the Druker Design Gallery.

Cover: Jimmy Pan MDes '20 examines the multi-colored vessel he fashioned out of interlocking card stock and tape in the J-Term workshop "Making the Industrial Basket at Three Scales" with Stephen Burks LF '19.

Back Cover: Attendees at the Envisioning Future Resilience Scenarios for the Boston Harbor Islands Conference.

All Images ©

Wendy Barrows Photography: Page 20

Michael D. Brown: Page 18

Dovids Photographer: Page 15

Jenny Fan: Page 48

Lucie Goodayle: Page 30 (top)

Maggie Janik: Cover, 15, 17, 26, 28, 37, 38, 40, 41, 45, 47

Anita Kan: Page 49

Justin Knight: Pages 2, 4, 7, 10, 11, 12, 21, 22, 24, 27, 32, 34, 46, 50-51, back cover

Gloria Mesa: Page 25, 30 (bottom)

Kay O'Neil and David Nelson: Page 16

Zara Tzanev: Page 29, 35, 42, 44

Piotr Wojnarski: Page 31 (top)

The Harvard University Graduate School of Design Giving Report acknowledges the generous support of alumni and friends for the fiscal year from July 1, 2018 to June 30, 2019.

While every effort has been made to ensure the accuracy of this list, we apologize for any misspellings or omissions.

Please notify Carra Clisby at carra_clisby@harvard.edu or 617.496.5128 of any error so that we may correct our records.



Harvard University Graduate
School of Design
Gund Hall
48 Quincy Street
Cambridge, MA 02138
gsd.harvard.edu

Copyright © 2019 by the President and
Fellows of Harvard College.

All rights reserved. No parts of this
publication may be reproduced or
transmitted in any form or by any means,
electronic or mechanical, including
photocopying, recording, or any information
storage and retrieval system, without prior
permission in writing from the Harvard GSD.

Design by Studio Rainwater
Printed in 2019 by Kirkwood